

Predator Tracker™ v9.0 – What's New

Latest features and benefits in v9.0

Before Installing v9.0

Predator Tracker v9.0 requires Windows 2000, XP, 2003 Server, 2008 Server or Vista. Existing customers that have older versions of Windows such as Windows 95, 98, ME or NT v4.0 must upgrade Windows prior to installing v9.0 of Predator Tracker.

Existing Tracker customers should backup the database prior to upgrading. Predator Tracker Administrator v9.0 will upgrade the database automatically from older v1.x, v2.x, v3.x, v7.x or v8.x versions to v9.0. After the database has been upgraded to v9.0 older versions of Predator Tracker will not be able to use the database.

Microsoft Internet Explorer v5.x or later and the Microsoft .NET Framework 2.0 is required to be installed before installing Predator Tracker v9.0.

Why v9.0?

By design, the primary goal of this release is to improve day to day tool and gage crib productivity such as improved reports, APIs, attachment viewing, check in and check out processes. Along the way support for Microsoft SQL Server 2008 and Windows 2008 Server have been added. Details of what's new are explained throughout this document and within the online help.

Installing v9.0

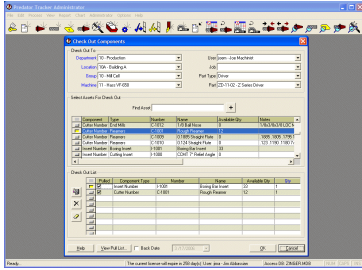
A new Install Wizard has been developed for v9. It is based on a single .MSI image and .CAB files have been eliminated. If you are running Windows 98, ME or NT v4.0 you must upgrade to Windows 2000, XP, 2003 Server or Vista prior to installing v9.0 of Predator Tracker.

By default installation occurs in the \program files\predator software\tracker 9.0 directory. If you were previously running v8.x we recommend uninstalling v8.x prior to installing v9.0.

© 1994 – 2009 Predator Software Inc. All rights reserved.

THIS IS A LIVING DOCUMENT. The information contained in this document represents the current view of Predator Software Inc. on the issues discussed as of the date of publication. Because Predator Software Inc. must respond to changing market conditions, it should not be interpreted to be a commitment on the part of Predator Software Inc., and Predator Software Inc. cannot guarantee the accuracy of any information presented after the date of publication.

Predator Tracker



Network Installations of v9.0

By committing to store the product installation on a server, users will enjoy automatic healing of all critical files upon running Predator Tracker. For example, suppose a user accidentally deletes pttracker.exe. Under normal circumstances he would be down and the software would fail to run. With v9.0 when the user double clicks the desktop shortcut all critical files are checked and if necessary restored from the network server and the software begins to run automatically.

The easiest way to perform a network installation is to step through the following:

1. Copy the contents of the CD to a \predator cd images\CD40\ or similar directory.
2. Run the setuptracker.exe from the CD40 directory.

NOTE: Should any automatic healing be necessary, Predator Tracker will be able to automatically extract the necessary files from the appropriate files stored in the CD40 directory. If you install from a CD, Predator Tracker will be forced to prompt for the CD.

What's New in v9.0?

New! Microsoft Windows 2008 Server Support

Support for Microsoft Windows 2008 Server has been added with v9.0 of Predator Tracker.

New! Microsoft SQL Server 2008 Support

Support for Microsoft SQL Server 2008 has been added with v9.0 of Predator Tracker.

New! Microsoft SQL Server 2008 Express Support

Support for Microsoft SQL Server 2008 Express has been added with v9.0 of Predator CNC Editor Enterprise. Support for this edition of SQL Server provides a free version of Microsoft SQL Server for small and medium manufacturers. The Express edition can be downloaded from Microsoft's web site.

New! Import Errors Report

A new Errors report has been added to the Import wizard within v9.0 of Predator Tracker. This report will provide a list of all the import errors that Predator Tracker identifies. This reduces the trial an error process when cleaning up bad csv files.

New! Remember Password

A new Remember Password option has been added to v9.0 of Predator Tracker. Enabling this option will automatically logon the user to Predator Tracker. The password is stored in a secure manor per Windows user.

New! User Object within Tracker APIs

A new user object has been added to v9.0 of Predator Tracker API to allow Predator users to be created, edited and deleted. These new methods can provide a more robust integration with ERP, MES and other business systems.

New! LastLogon API

A new lastlogon API has been added which requires the Remember Password option be enabled. The advantage of this method is that database and user credentials are not visible within a vbscript, VBA macro, windows script or javascript.

New! Check In Options

New options for check in have been added. Departments, locations, groups, machines, users, travelers, jobs, part types, parts and operations can now be specified as required or optional during a check in. This provides increased accuracy when tracking usage and consumption. In addition, a new Filter by Check Out option can be specified within the check in dialog. This option limits components by honoring the pulldowns for department, location, group, machine, user, traveler, job, part type, part and operation to match those that have been checked out.

The screenshot shows the 'Check In Components' dialog box. It has a title bar with a close button. The main area is divided into several sections:

- Check In To:** A set of dropdown menus for Department, Location, Group, Machine, User, Job, Traveler, Part Type, Part, and Operation.
- Select Components For Check In:** A section with icons for selection and a 'Find Cutter Number' search field. Below it is a table with columns: Cutter Type, Cutter Number, Cutter Name, Checked Out Qty, and Notes.
- Check In List:** A table with columns: Returned, Component Type, Number, Name, Checked, and Qty.
- Footer:** Buttons for Help, Return Report..., a Custom Date dropdown (set to 11/23/2009), a Filter by Check Out checkbox, and OK/Cancel buttons.

Cutter Type	Cutter Number	Cutter Name	Checked Out Qty	Notes
Drills	1111	3/4" Drill	3	notes go here about this tool
IMTS - Misc	120	Electrical Tape	1	
Drills	161-1	3/8" Drill	1	
Drills	C-1002	Standard	8	
Drills	C-1007	1/2 HD Jobber	2	
Drills	C-1008	1/4 Tri-Flute	1	

Returned	Component Type	Number	Name	Checked	Qty

New! Check Out Options

A new part filter option can be specified within the check out dialog. This option limits the available components to those with a matching part reference. In addition a traveler and/or operation can be specified during each check out and configured to be required or optional.

New! Check Out Reports

10 new integrated check out reports have been added with grouping by department, location, group, user, job, traveler, part type, part and operation. These new check out reports eliminates the individual check out tool, cutter, insert, gage and kit reports. Should individual components be desired then use the appropriate filtering options. An extensive number of filtering options is included.

New! Import Gage Calibration and Tool Rework Information

Gage calibration and tool rework information can now be imported and updated.

New! Predator PDM Compatibility

Support for Predator PDM v9 has been added with v9.0 of Predator Tracker.

New! Solidworks eDrawings Support

Predator Tracker includes Solidworks 2010 eDrawings support for viewing Solidworks assemblies, parts and drawings. In addition Autocad DWG and DXF files are supported.

New! Microsoft Visio Support

Predator Tracker includes Microsoft Visio support for viewing Microsoft Visio drawings.

Improved! Microsoft Word Support

Predator Tracker includes Microsoft 2007 Word support for viewing Microsoft Word, Wordperfect, Works and RTF documents.

Improved! Microsoft Excel Support

Predator Tracker includes Microsoft 2007 Excel support for viewing Microsoft Excel spreadsheets.

Improved! Microsoft Powerpoint Support

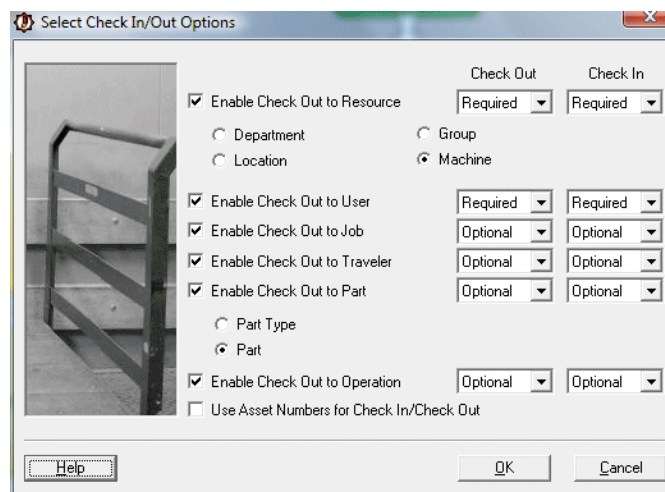
Predator Tracker includes Microsoft 2007 Powerpoint support for viewing Microsoft presentations.

Improved! Adobe Acrobat Reader Support

Predator Tracker includes Adobe Acrobat Reader v9.2 for viewing PDF documents. This includes 3D PDFs.

Improved! Check In/Out Options

The previous Check Out Options dialog within the Options menu has been renamed to Check In/Out Options. This dialog can configure both the Check In and Check Out requirements.



Improved! Assemble and Disassemble Kits

The assemble and disassemble kit wizards support an optional custom date. The default is today's date.

Improved! Rework and Calibration Queue

Both the rework and calibration queue dialogs are now resizable. Columns widths and other preferences are now automatically saved. In addition, a new dynamic search feature has been added to Rework Queue and Calibration Queue. Searching defaults to the tool or gage number field. By clicking any field, Predator automatically sorts the components and changes the search field. The search field is dynamic with each keystroke so as soon as a match is found the component is automatically highlighted. Within the search field the following special characters can be used * for wildcards, > for greater than, < for less than, >= for greater than or equal, and finally <= for less than or equal. For example, typing ST will automatically jump to the first component that starts with an ST including STAR, STARRET etc. If you typed *ST then the following components will be found 1000ST, 41ST etc. The greater than and less than special characters require numeric or date fields.

Improved! Check In and Check Out

Both the check in and check out wizards have been improved to automatically save the columns widths. In addition the following new shortcut keys have been added:

- ALT+D for department
- ALT+L for location
- ALT+G for group
- ALT+M for machine
- ALT+U for user
- ALT+J for job
- ALT+R for traveler
- ALT+T for part type
- ALT+P for part
- ALT+O for operation
- ALT+Z to undo the last item

The new shortcut keys can be programmed into bar code guns to simplify the check in and check out procedure. In addition, a new dynamic search feature has been added to check in and check out. Searching defaults to the component number. By clicking any field, Predator automatically sorts the components and changes the search field. The search field is dynamic with each keystroke so as soon as a match is found the component is automatically highlighted. Within the search field the following special characters can be used * for wildcards, > for greater than, < for less than, >= for greater than or equal, and finally <= for less than or equal. For example, typing ST will automatically jump to the first component that starts with an ST including STAR, STARRET etc. If you typed *ST then the following components will be found 1000ST, 41ST etc. The greater than and less than special characters require numeric or date fields.

Improved! View Tools

View tools has been improved with additional columns and new right mouse shortcuts including Material References, Part References, Rework Information, Rework Operation Definitions and Vendor Information. Searching has also been improved. These new shortcuts simplify day to day operation.

Improved! View Cutters

View cutters has been improved with additional columns and new right mouse shortcuts including Current Inventory Quantities, Material References, Part References and Vendor Information. Searching has also been improved. These new shortcuts simplify day to day operation.

Improved! View Inserts

View inserts has been improved with additional columns and new right mouse shortcuts including Current Inventory Quantities, Material References, Part References and Vendor Information. Searching has also been improved. These new shortcuts simplify day to day operation.

Improved! View Gages

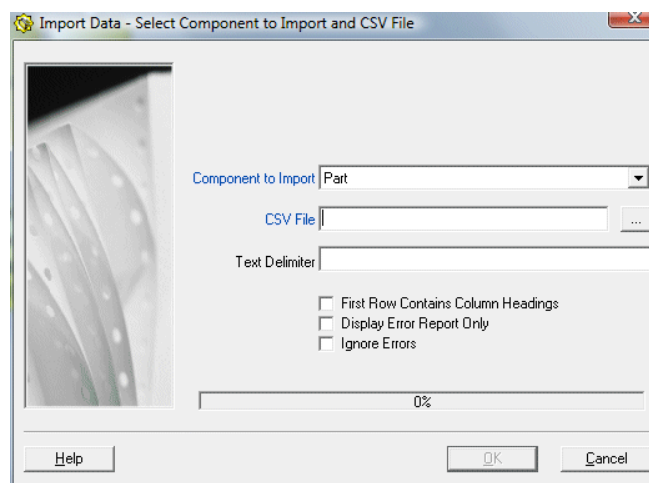
View gages has been improved with additional columns and new right mouse shortcuts including Material References, Part References, Calibration Information, Calibration Operation Definitions, Vendor Information, Reference Dimensions and Serial Number List. Searching has also been improved. These new shortcuts simplify day to day operation.

Improved! View Kits

View kits has been improved with additional columns and new right mouse shortcuts including Material References and Part References. Searching has also been improved. These changes simplify day to day operation.

Improved! Importing

Importing CSV files has been improved to automatically create new components or update existing components with new details. New checkbox options have been added to ignore errors and to display an error report. The ignore errors option can be used when the csv file contains known errors that you don't want to fix and you wish to force the import to continue with the remaining good data. The error report allows you to quickly fix a number of errors within a csv file prior to importing the csv file.



Improved! Gage Calibration Due Report

The Gage Calibration Due report has been improved with a new date option. This new option allows you to review gages that are due to expire in the future. By default today's date is used.

Improved! Tool Rework Due Report

The Tool Rework Due report has been improved with a new date option. This new option allows you to review tools that are due for rework in the future. By default today's date is used.

Improved! Partial Purchase Requests

Partial receives with purchase requests support typing specific quantities vs. requiring clicking the Receive All button.

Improved! Importing Tool and Gage Serial Numbers

Importing tool and gage serial numbers have been improved to support additional details and different statuses including checked out.

Improved! Check In and Check Out Tracker APIs

Check In and Check Out APIs have been improved in v9.0 of Predator Tracker API to simplify integration with vending machines and vending drawers. These new methods can provide a more robust integration with ERP, MES and other business systems.

Improved! Purchase Requests

All references to purchase orders have been replaced with purchase requests.

Improved! Maximum Quantity

New and Edit wizards for tools, cutters, inserts, gages and kits have been improved with additional error handling for maximum quantity.

Improved! Pulldown Performance

Pulldowns for tools, cutters, inserts, gages, kits, departments, locations, groups, machines, part types and parts have been improved for greater performance with large datasets within all dialogs. For example 100,000+ part numbers can be selected and changed in less than 1 second. Support for up arrow, down arrow, pg up, pg dwn, ctrl+up arrow and ctrl+down arrow has been improved within pulldowns as well.

Improved! Pull Reports

All pull reports have been improved to support longer bar codes for component numbers.

Improved! Pull Reports

All pull reports have been improved to support longer bar codes for component numbers.

Improved! Tool, Cutter, Insert, Gage and Kit Barcode Reports

All barcode reports have been improved to support longer bar codes for component numbers.

Improved! Predator CNC Editor Enterprise Compatibility

Support for Predator CNC Editor Enterprise v9 has been improved with v9.0 of Predator Tracker.

Improved! Predator DNC Compatibility

Support for Predator DNC v9 has been improved with v9.0 of Predator Tracker.

Improved! Predator MDC Compatibility

Support for Predator MDC v9 has been improved with v9.0 of Predator Tracker.

Improved! Predator Travelers Compatibility

Support for Predator Travelers v9 has been improved with v9.0 of Predator Tracker.

Improved! Predator Virtual CNC Compatibility

Support for Predator Virtual CNC v9 has been improved with v9.0 of Predator Tracker.

Improved! HTML based Online Help

Updated online help expands several topics with new details.

Bug Fix! Check Out Shortcuts

Within the Check Out dialog fixed a bug with ALT+M and others when the field was not enabled.

Bug Fix! SIM ID Button

Predator Tracker v9.0 fixes a bug displaying the SIM number of remote SIMs within Windows Remote Desktop.

For the latest on Predator Tracker, check our web site at

<http://www.predator-software.com>