



Predator Travelers™ v9.0 – What's New

Latest features and benefits in v9.0

Before Installing v9.0

Predator Travelers v9.0 requires Windows 2000, XP, 2003 Server, 2008 Server or Vista. Existing customers that have older versions of Windows such as Windows 95, 98, ME or NT v4.0 must upgrade Windows prior to installing v9.0 of Predator Travelers.

Existing Travelers customers should backup the database prior to upgrading. Predator Travelers Administrator v9.0 will upgrade the database automatically from older v1.x, v2.x, v3.x, v7.x or v8.x versions to v9.0. After the database has been upgrade to v9.0 older versions of Predator Travelers will not be able to use the database.

Microsoft Internet Explorer v5.x or later and the Microsoft .NET Framework 2.0 is required to be installed before installing Predator Travelers v9.0.

Why v9.0?

By design, the primary goal of this release is to improve attachment viewing while adding support for Microsoft SQL Server 2008 and Windows 2008 Server. Along the way improvements have been added to importing and APIs. Details of what's new are explained throughout this document and within the online help.

Installing v9.0

A new Install Wizard has been developed for v9. It is based on a single .MSI image and .CAB files have been eliminated. If you are running Windows 98, ME or NT v4.0 you must upgrade to Windows 2000, XP, 2003 Server, 2008 Server or Vista prior to installing v9.0 of Predator Travelers.

By default installation occurs in the \program files\predator software\Travelers 9.0 directory. If you were previously running v8.x we recommend uninstalling v8.x prior to installing v9.0.

v9.0 Serial Numbers and Access Codes

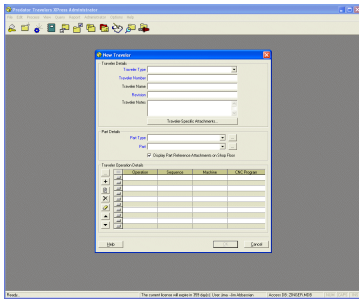
Version 9 includes a serial number and an access code that are required after the installation during registration of the software.

NOTE: The serial number must start with 09. If this is not the case contact us.

© 1994 – 2009 Predator Software Inc. All rights reserved.

THIS IS A LIVING DOCUMENT. The information contained in this document represents the current view of Predator Software Inc. on the issues discussed as of the date of publication. Because Predator Software Inc. must respond to changing market conditions, it should not be interpreted to be a commitment on the part of Predator Software Inc., and Predator Software Inc. cannot guarantee the accuracy of any information presented after the date of publication.

Predator Travelers



Network Installations of v9.0

By committing to store the product installation on a server, users will enjoy automatic healing of all critical files upon running Predator Travelers. For example, suppose a user accidentally deletes ptrav.exe. Under normal circumstances he would be down and the software would fail to run. With v9.0 when the user double clicks the desktop shortcut all critical files are checked and if necessary restored from the network server and the software begins to run automatically.

The easiest way to perform a network installation is to step through the following:

1. Copy the contents of the CD to a \predator cd images\CD40\ or similar directory.
2. Run the setuptraveler.exe from the CD40 directory.

NOTE: Should any automatic healing be necessary, Predator Travelers will be able to automatically extract the necessary files from the appropriate files stored in the CD40 directory. If you install from a CD, Predator Travelers will be forced to prompt for the CD.

What's New in v9.0?

New! Microsoft Windows 2008 Server Support

Support for Microsoft Windows 2008 Server has been added with v9.0 of Predator Travelers.

New! Microsoft SQL Server 2008 Support

Support for Microsoft SQL Server 2008 has been added with v9.0 of Predator Travelers.

New! Microsoft SQL Server 2008 Express Support

Support for Microsoft SQL Server 2008 Express has been added with v9.0 of Predator CNC Editor Enterprise. Support for this edition of SQL Server provides a free version of Microsoft SQL Server for small and medium manufacturers. The Express edition can be downloaded from Microsoft's web site.

New! Predator PDM Compatibility

Support for Predator PDM v9 has been added with v9.0 of Predator Travelers.

New! Import Errors Report

A new Errors report has been added to the Import wizard within v9.0 of Predator Travelers. This report will provide a list of all the import errors that Predator Travelers identifies. This reduces the trial an error process when cleaning up bad csv files.

New! Remember Password

A new Remember Password option has been added to v9.0 of Predator Travelers. Enabling this option will automatically logon the user to Predator Travelers. The password is stored in a secure manor per Windows user.

New! User Object within Travelers APIs

A new user object has been added to v9.0 of Predator Travelers API to allow Predator users to be created, edited and deleted. These new methods can provide a more robust integration with ERP, MES and other business systems.

New! LastLogin API

A new lastlogon API has been added which requires the Remember Password option be enabled. The advantage of this method is that database and user credentials are not visible within a vbscript, VBA macro, windows script or javascript.

New! Solidworks eDrawings Support

Predator Travelers includes Solidworks 2010 eDrawings support for viewing Solidworks assemblies, parts and drawings. In addition Autocad DWG and DXF files are supported.

New! Microsoft Visio Support

Predator Travelers includes Microsoft Visio support for viewing Microsoft Visio drawings.

Improved! Microsoft Word Support

Predator Travelers includes Microsoft 2007 Word support for viewing Microsoft Word, Wordperfect, Works and RTF documents.

Improved! Microsoft Excel Support

Predator Travelers includes Microsoft 2007 Excel support for viewing Microsoft Excel spreadsheets.

Improved! Microsoft Powerpoint Support

Predator Travelers includes Microsoft 2007 Powerpoint support for viewing Microsoft presentations.

Improved! Adobe Acrobat Reader Support

Predator Travelers includes Adobe Acrobat Reader v9.2 for viewing PDF documents. This includes 3D PDFs.

Improved! Importing

Importing CSV files has been improved to automatically create new components or update existing components with new details. New checkbox options have been added to ignore errors and to display an error report. The ignore errors option can be used when the csv file contains known errors that you don't want to fix and you wish to force the import to continue with the remaining good data. The error report allows you to quickly fix a number of errors within a csv file prior to importing the csv file.

Improved! Pulldown Performance

Pulldowns for cutters, inserts, departments, locations, groups, machines, part types and parts have been improved with Predator Travelers for greater performance with large datasets within all dialogs. For example 100,000+ part numbers can be selected and changed in less than 1 second. Support for up arrow, down arrow, pg up, pg dwn, ctrl+up arrow and ctrl+down arrow has been improved within pulldowns as well.

Improved! Predator CNC Editor Enterprise Compatibility

Support for Predator CNC Editor Enterprise v9 has been improved with v9.0 of Predator Travelers.

Improved! Predator DNC Compatibility

Support for Predator DNC v9 has been improved with v9.0 of Predator Travelers.

Improved! Predator MDC Compatibility

Support for Predator MDC v9 has been improved with v9.0 of Predator Travelers.

Improved! Predator Tracker Compatibility

Support for Predator Tracker v9 has been improved with v9.0 of Predator Travelers.

Improved! Predator Virtual CNC Compatibility

Support for Predator Virtual CNC v9 has been improved with v9.0 of Predator Travelers.

Improved! HTML based Online Help

Updated online help expands several topics with new details.

For the latest on Predator Travelers, check our web site at
<http://www.predator-software.com>